

Masted
trucks

■ **MC 30**

A reliable, productive yard truck

- Capacity 3000 kg
- Lifting height 3 m to 7 m



MANITOU

MC 30: A reliable, productive yard truck

Specially designed for outdoor handling applications, the MC 30 makes managing your storage area easier.

Handle and store with full peace of mind and easily handle and store loads of up to 3 tonnes, even on unconsolidated ground.



• The MANITOU solution for outdoor handling

Ideal for loading lorries and storage yards, the MC 30 makes the operator's life simpler, due to its distinctive features: a wide track for improved stability, a high ground clearance for travelling over kerbs or other obstacles, full visibility, rugged mast for safety, quick and safe cab access, ergonomic controls for improved manoeuvrability, and high travelling speed (24 km/h) for higher efficiency. In addition, because of the stability of the MC 30, the operator can safely access the most unstable areas of the site and quickly put the load into place.

• The experience of versatile handling

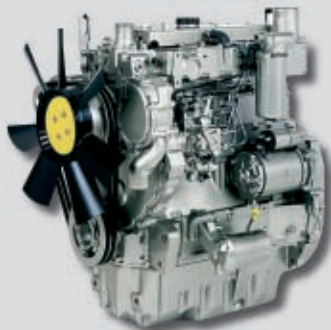
Already widely acclaimed for its unmatched performance, the MC 30 is suited to any kind of handling: in narrow alleys, it proves outstandingly manoeuvrable due to its short turning radius; for storage at a height, it can be fitted with up to 7-metre masts; it has a hydraulic differential lock as standard which allows it to travel through difficult areas.



The MC 30 is indispensable, whatever your activity.

• The assurance of rugged design

The MC 30, and the MC range in general, is the result of continuous interaction between MANITOU's design office and the users. The components have been designed for use in the most arduous conditions.



The Perkins 1104 C 44 – 4-cylinder direct-injection engine has been chosen for its performance and reliability. It develops 84 hp/61.5 kW at the rated speed of 2200 rpm and conforms to the Euro 2 standard. In addition, the MC 30 is fitted with a torque converter transmission and a 4-ratio gearbox, so that the user can choose between driveability or speed of travel, depending on working conditions.

• The value of easy maintenance

As maintenance is part of the life of a handling truck, the operator has full access to the engine for easy inspection and maintenance. The quality of design of the MC 30 minimizes the risk of downtime, extends the lifetime of the truck, and reduces maintenance costs.



The MC range includes models from 3 to 7 tonnes.






MC 30 Roller masts

MASTS		LIFTING HEIGHT ON FORKS (mm)	OVERALL HEIGHT MAST LOWERED (mm)	FREE LIFT ON FORKS (mm)	OVERALL HEIGHT MAST EXTENDED (mm)	HEIGHT AT MAX. CAPACITY (mm)		CAPACITY AT MAX. HEIGHT (kg)		MAST TILTING ANGLE Front/Rear
						With side shift carriage	Without side shift carriage	With side shift carriage	Without side shift carriage	
DUPLEX TOTAL VISIBILITY	3.00 m	3030	2460	130	4045	3000		3000	3000	6°/12°
	3.30 m	3330	2460	130	4345	3300		3000	3000	6°/12°
	3.70 m	3730	2715	130	4745	3700		3000	3000	6°/12°
	4.00 m	4030	2905	130	5045	4000		3000	3000	6°/12°
	4.50 m	4530	3155	130	5545	4000		2800	2900	6°/12°
	5.00 m	5030	3405	130	6045	4000		2400	2600	6°/12°
DUPLEX FREE LIFT	3.00 m	3040	2305	1383	3962	3000		3000	3000	6°/12°
	3.30 m	3340	2455	1533	4262	3300		3000	3000	6°/12°
	3.50 m	3540	2555	1633	4462	3500		3000	3000	6°/12°
	3.70 m	3740	2715	1793	4662	3700		3000	3000	6°/12°
	4.00 m	4040	2905	1983	4962	4000		3000	3000	6°/12°
TRIPLEX TOTAL VISIBILITY	5.50 m Without Free lift	5545	2985	-	6655	4000		1900	2100	6°/10°
TRIPLEX FREE LIFT	3.70 m	3740	2460	1283	4662	3700		3000	3000	6°/12°
	4.00 m	4040	2460	1383	4962	4000		3000	3000	6°/12°
	4.30 m	4340	2460	1533	5262	4000		2900	3000	6°/12°
	4.70 m	4740	2555	1633	5662	4000		2600	2800	6°/12°
	5.00 m	5040	2715	1793	5962	4000		2400	2600	6°/12°
	5.50 m	5540	2905	1983	6462	4000		1900	2100	6°/12°
	6.00 m	6040	3155	2233	6962	4000		1600	1800	6°/12°
	6.50 m	6540	3405	2483	7462	4000		1200	1350	6°/12°
	7.00 m	7040	3655	2733	7962	4000		900	1000	6°/12°

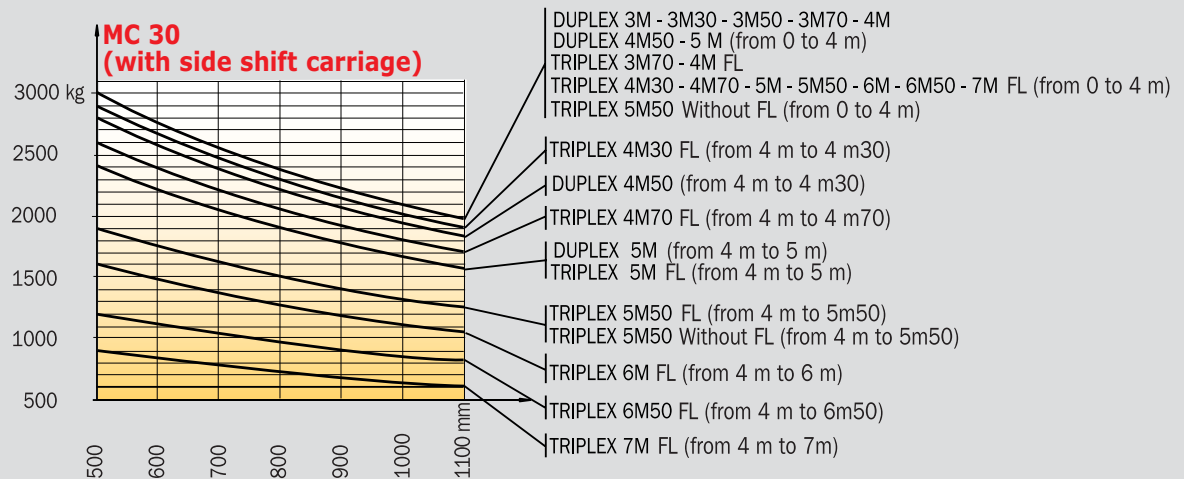
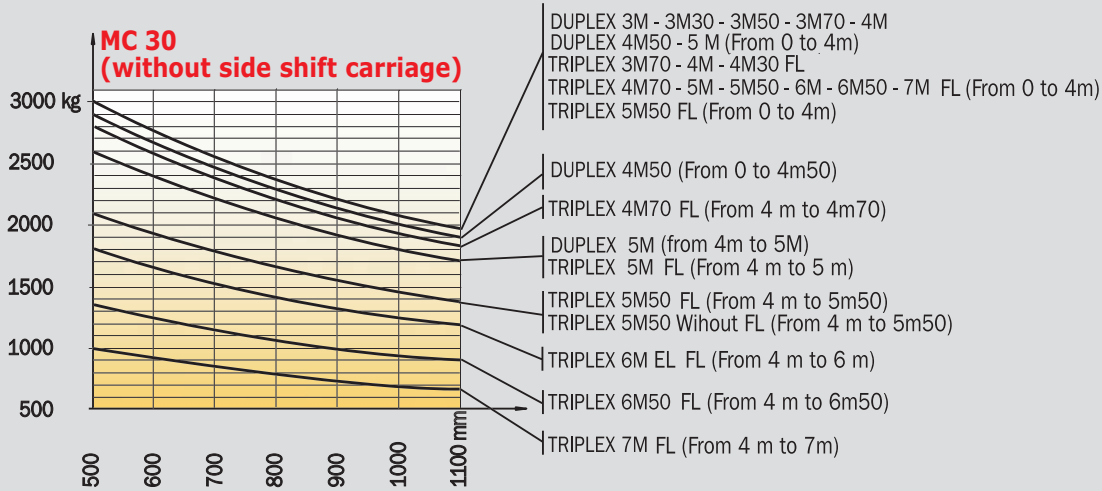
MC 30 Sliding masts

MASTS		LIFTING HEIGHT ON FORKS (mm)	OVERALL HEIGHT MAST LOWERED (mm)	FREE LIFT ON FORKS (mm)	OVERALL HEIGHT MAST EXTENDED (mm)	HEIGHT AT MAX. CAPACITY (mm)		CAPACITY AT MAX. HEIGHT (kg)		MAST TILTING ANGLE Front/Rear
						With side shift carriage	Without side shift carriage	With side shift carriage	Without side shift carriage	
DUPLEX TOTAL VISIBILITY	3.00 m	3045	2555	-	4055	3000		2700	3000	6°/10°
	3.60 m	3645	2855	-	4655	3600		2700	3000	6°/10°
	4.00 m	4045	3055	-	5055	4000		2700	3000	6°/10°
	4.50 m	4545	3405	-	5655	4000		2410	2700	6°/10°
TRIPLEX TOTAL VISIBILITY	4.50 m	4545	2470	-	5470	4500		2410	2700	6°/10°
	5.40 m	5445	2860	-	6460	3600		1600	1750	6°/10°
	6.75 m	6795	3330	-	7830	4500		900	1000	6°/10°
TRIPLEX FREE LIFT	4.55 m	4595	2320	1450	5420	1450		2410	2700	6°/10°

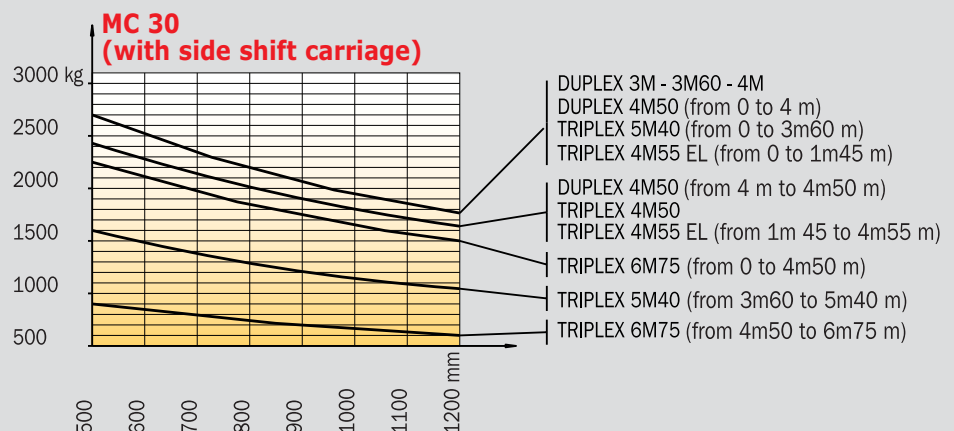
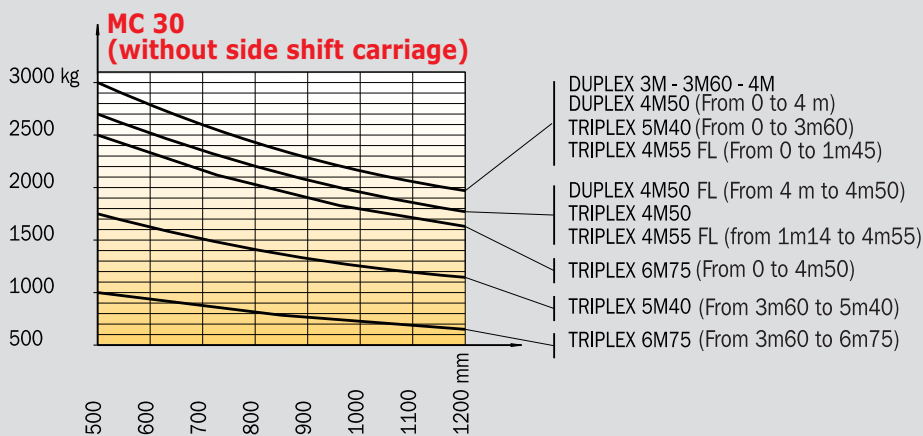
MC 30 Tyres

Standard		Option		
Front	Rear	Front	Rear	Rear
Mixed	Industrial	Farming	Industrial	Industrial
14,5 R 20 MPT 80 Tubeless 18 PR - 143 G/J	10 R 17.5 134 M G291	375/75 R 20 XM 27 Tubeless 155 A2/142 B	10 R 17.5 LDR Tubeless 134/132 L	10 R 17.5 LSR Tubeless 134/132 L
Tyre width (mm)				
350	250	385	262	262
Overall width (mm)				
1900	1815	1935	1827	1827
				

MC 30 with roller mast load chart



MC 30 with sliding mast load chart



MC 30



Load capacity3000 kg
At 500 mm load center



Standard lifting height3.70 m
Speed unladen/laden (m/s)
Lifting0.57/0.54
Lowering.....0.48/0.50



Tyres
Front.....14.5 R 20 MPT 80
Tubeless 18 PR 143 G/J
Rear10 R 17.5 134 M G 291



Forks (mm)
Length1200
Width x thickness.....125x40



Brakes hydraulically operated oil-immersed multidiscs



PERKINS engine
Type1104C 44
Capacity4 cyl. 4400 cm³
Rated speed.....2200 tr/mn
Power at 2300 t/mn.....61,5 Kw (84 HP)
(ISO/TR 14396)
Maximum torque302 Nm at 1400 tr/mn
Direct injection
Water cooling



Transmission.....Torque convertor
Electro hydraulic reversing shift
4 speeds forward and reverse
Maximum travel speed24 km/h
Hydraulic differential lock



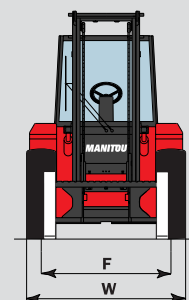
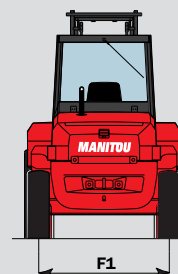
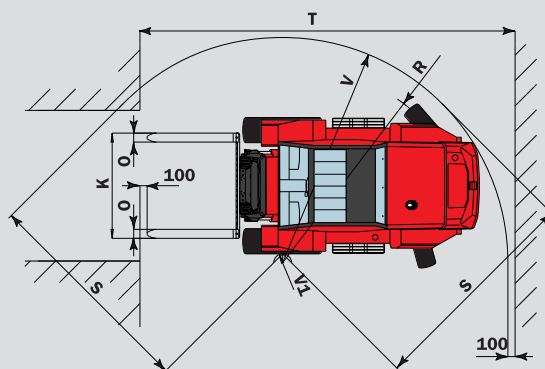
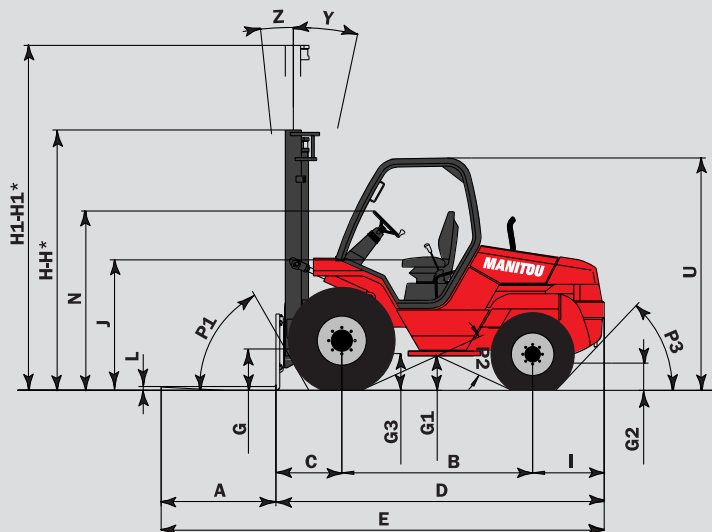
Hydraulics
Main pump
Gear type185 bar/89 l./mn
Flow divider with priority to steering
gear type.....128 bar/89 l./mn



Capacities
Cooling system13 l
Engine oil.....8,5 l
Hydraulic oil64 l
Transmission oil.....15,5 l
Fuel tank.....85 l



Weight (with mast and forks)5090kg



	Roller mast	Slide mast
A	1200	1200
B	1995	1995
C	697	715
D	3442	3460
E	4642	4660
F	1550	1550
F1	1564	1564
G	425	385
G1	385	385
G2	300	300
G3	380	380
H	2715	2855
H1	4745	4655
H*	2205	3055
H1*	4662	4055
I	750	750
J	1400	1400
K	1470	1320
L	40	45
N	1880	1880
O	125	125
P1	60,5°	60,5°
P2	49°	49°
P3	46,5°	46,5°
R	2910	2910
S	3060	3060
T	5030	5285
U	2460	2460
V	3210	3210
V1	300	300
W	1900	1900
Y	12°	10°
Z	6°	6°

mm

Standard equipment

- Torque converter transmission
- Driver protector with tinted front windscreen and rear window
- Skai seat
- Front and rear wipers
- Left-hand outside rear-view mirror
- Steering wheel with reverse control
- Hydraulic differential lock
- Load damper
- ...

Options

- Enclosed cab with tinted windows and heating front and rear wipers, front windscreen washer
- Revolving light
- Audible back-up warning signal
- Road lighting
- Work lighting
- Slide masts
- Miscellaneous accessories, such as buckets, sideshift carriage, grabs, etc.

This equipment described in this leaflet may be standard, optional, or unavailable, depending on the versions. For more details, contact your MANITOU dealer.

Manitou, material handling world leader

Inventor of the rough terrain forklift truck, Manitou offers today the most comprehensive range to meet all specific handling and personal lifting requirements :



Telescopic trucks

MANISCOPIC

Rough terrain and semi industrial mast trucks

MANITOU



Access equipment

MANIACCESS

Compact telescopic handler

Twisco



Truck mounted forklifts

MANITRANSIT

Backhoe/Loader with telescopic boom

MANIHOE

Swinging arm and articulated wheeled loaders

MANILOADER



Electric pallet trucks and electric stackers

MANILEC



This equipment described in this leaflet may be standard, optional, or unavailable, depending on the versions. For more details, contact your MANITOU dealer.

A network of skilled professionals at your service

With a network of 500 service and parts centres in more than 100 countries, Manitou provides an efficient after-sales support based on the expertise of 2000 factory trained technicians.

MANITOU BF SA

B.P. 249 - 44158 Ancenis Cedex - France

Tél. : 33 2 40 09 10 11 / Export Department Fax : 33 2 40 09 10 97

www.manitou.com

700128EN - BE 100 Ind C



MANITOU